



Setting Up Your Computer for High-Speed Internet Access

These instructions are appropriate for ResNet and most other high-speed Internet services. If you have difficulty connecting your computer to ResNet, contact the HelpDesk. If you cannot configure your computer for Internet access through another provider, please contact its technical support.

The instructions below are separated by operating system; select the section that is appropriate for your computer. (The operating system version is usually displayed when your computer first starts.) Your screens may vary slightly from those shown.

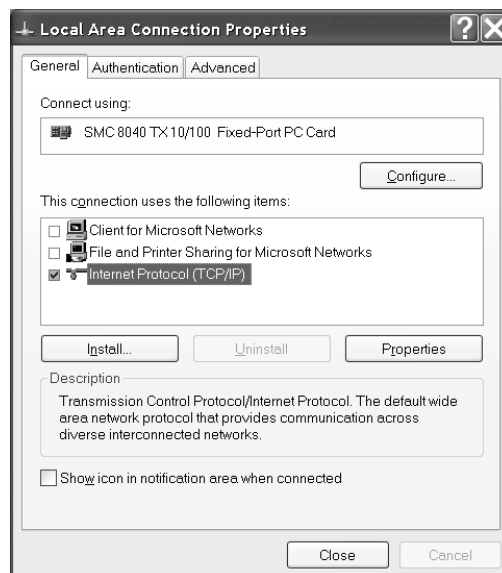
Instructions for Windows 2000 and XP

Step 1: Navigate to Local Area Connection Properties

- Click on the **Start** button at the lower left of your screen
- Select **Control Panel**
- If using Windows XP, click on **Network and Internet Connections** and then click on **Network Connections**
- If using Windows 2000, click on **Network and Dial-Up Connections**
- Right click on **Local Area Connection** and select **Properties**

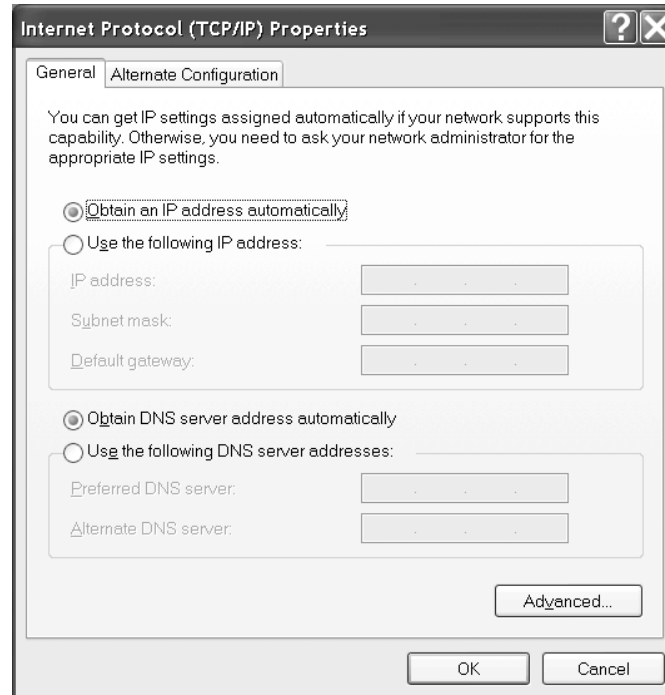
Step 2: Disable Microsoft networking

Disabling Microsoft networking will prevent anyone on your network from being able to look at your computer and see the files on your hard drive. Make sure that there is no check in the boxes to the left of **Client for Microsoft Networks** and **File and Printer Sharing for Microsoft Networks** as shown below.



Step 3: Verify your TCP/IP settings

- Highlight **Internet Protocol (TCP/IP)** and click on **Properties**.
- Make sure **Obtain an IP address automatically** and **Obtain DNS server address automatically** are both selected as shown below.
- Click **OK** to close the TCP/IP properties.



Step 4: Close Local Area Properties

If you receive a prompt asking you to restart your computer, select **Yes**.

Step 5: Configure Internet Explorer

Skip to the section of this document entitled "Configuring Internet Explorer", located on page eight.

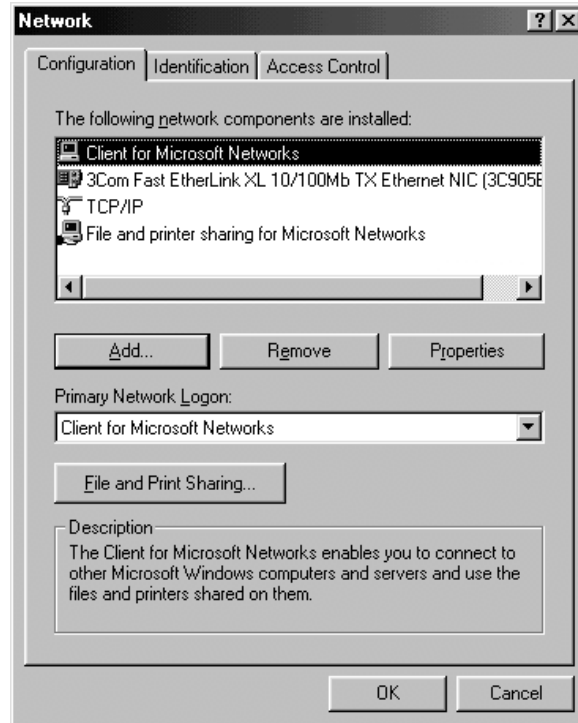
Instructions for Windows 95/98/ME

Step 1: Navigate to the Network Control Panel

- Click on the **Start** button at the lower left of your screen
- Select **Control Panel**
- If using Windows ME, select **View All Control Panel Options** on the left side of the screen
- Double-click on **Network**

Step 2: Disable Microsoft networking

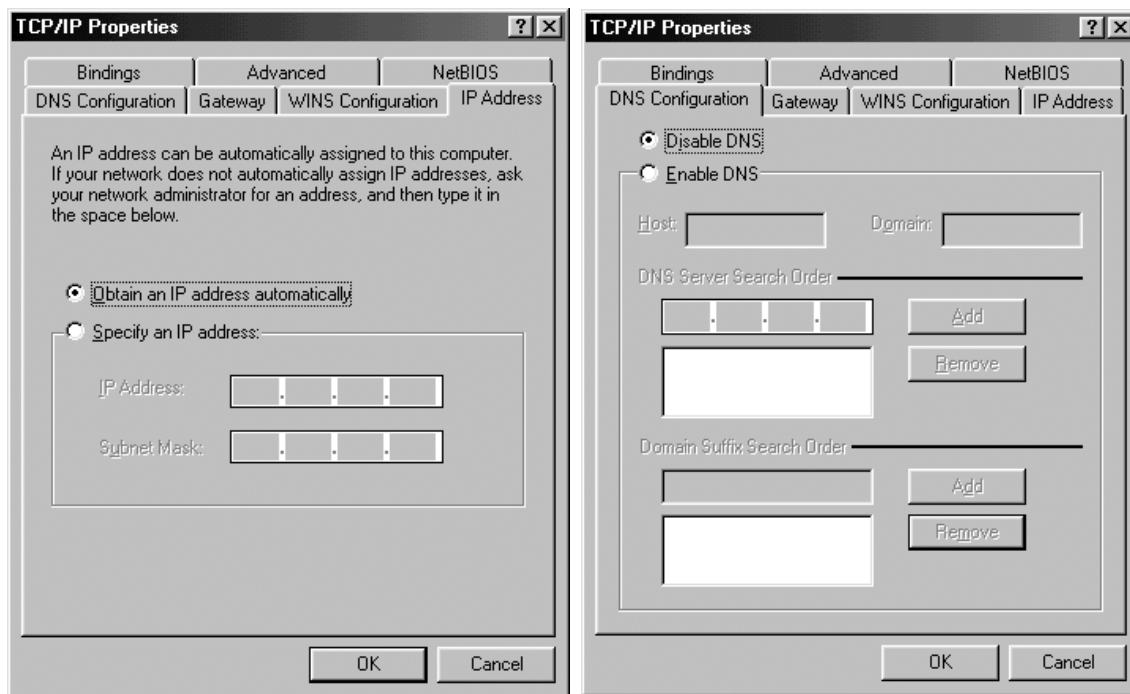
Disabling Microsoft networking will prevent anyone on your network from being able to look at your computer and see the files on your hard drive. To disable Microsoft networking, select **Client for Microsoft Networks** and click **Remove**.



Step 3: Verify your TCP/IP settings

- Highlight **Internet Protocol (TCP/IP)** and click on **Properties**.
- Select the **IP Address** tab
- Make sure **Obtain an IP address automatically** is selected (see next page)
- Select the **DNS Configuration** tab
- Make sure **Disable DNS** is selected
- Select the **Gateway** tab

- Remove any entries listed
- Click **OK** to close the TCP/IP properties



Step 4: Close the Network Control Panel and restart your computer

Click **OK** to close the network control panel. You may receive a warning that your network setup is incomplete because you removed the Client for Microsoft Networks. If you receive this warning, click **YES** to continue anyway. You should be prompted to restart your computer. Select **YES** when prompted.

Step 5: Configure Internet Explorer

Skip to the section of this document entitled “Configuring Internet Explorer”, located on page eight.

Instructions for Macintosh OS X

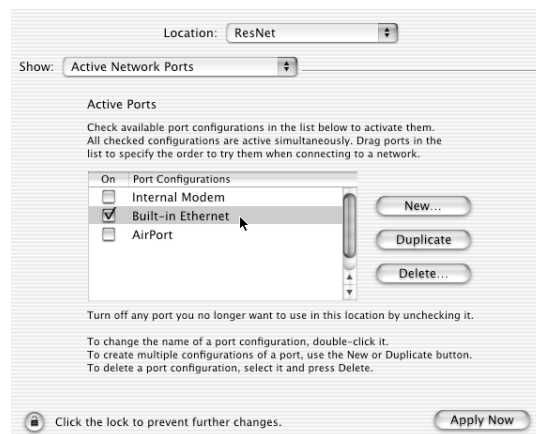
Step 1: Open your Network System Preferences.

1. Click the **System Preferences** icon on the Dock.
(If it is not visible on the Dock, click the Apple menu in the top left corner of the screen, then click System Preferences)
2. Click the **Network** icon in the “Internet and Network” section.



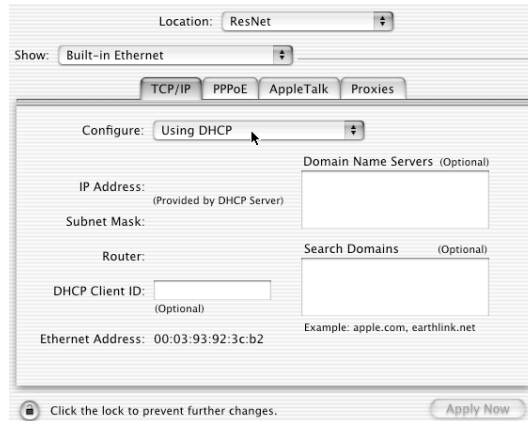
Step 2: Create a new network location.

1. In the “Location” drop-down menu, choose **New Location....** Enter the name of your service provider for the location name.
2. In the “Show” drop-down menu, choose **Active Network Ports.**
3. You will have various items in the Active Ports list, as shown below. You want to make sure that the only one checked is your **Built-in Ethernet**, then click **Apply Now.**



Step 3: Configure your ResNet location.

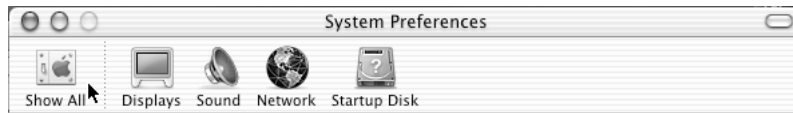
1. In the “Show” drop-down menu, choose **Built-in Ethernet.**
2. On the “TCP/IP” tab, make sure that the “Configure” drop-down box is set to **Using DHCP.** Everything else should be left blank.



Step 4: Protecting your computer

The following steps will make sure that other Internet users do not have access to your computer. Do not make any changes to these recommendations unless you understand the consequences!

1. Go to the “AppleTalk” tab in your Network System Preferences. Make sure that the **Make AppleTalk Active** box is *unchecked*.
2. Click the **Apply Now** button (if available), then click the **Show All** button on the toolbar.



3. Click the **Sharing** icon in the “Internet and Network” section.

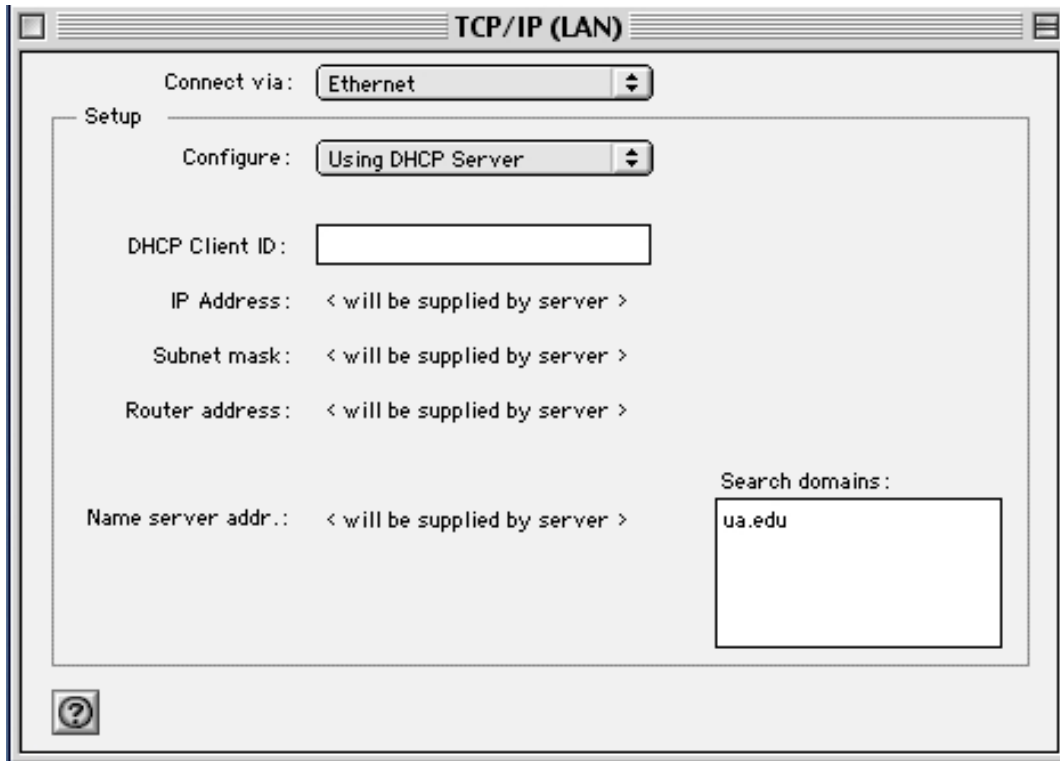


4. On the “File & Web” tab, make sure that both **File Sharing** and **Web Sharing** are turned *off*, and that the **Allow FTP access** box is *unchecked*. On the “Application” tab, make sure that all boxes are *unchecked*. **Changing these settings is a violation of the ResNet Acceptable Use Agreement, and may be disallowed on other services as well.**

Instructions for Macintosh OS 9

Step 1: Navigate to the TCP/IP control panel

- From the Apple Menu, select **Control Panels**
- Select **TCP/IP**



Step 2: Set your TCP/IP settings

- Select **Ethernet** from the **Connect via** pull-down menu
- Select **Using DHCP Server** from the **Configure** pull-down menu

Step 3: Close the TCP/IP control panel and save your settings

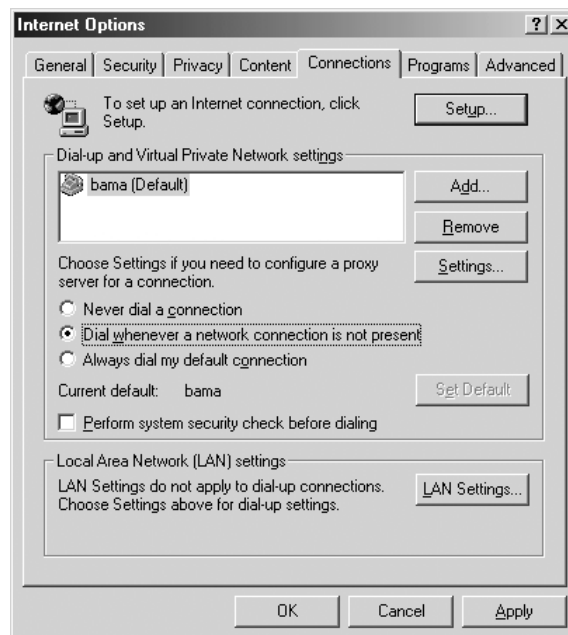
Step 4: Your Web browser should now work; if it doesn't, reboot your computer.

Configuring Internet Explorer (Windows Machines Only)

Depending on your versions of Windows and Internet Explorer, your screens may look slightly different from those shown below.

Step 1: Navigate to Internet Options

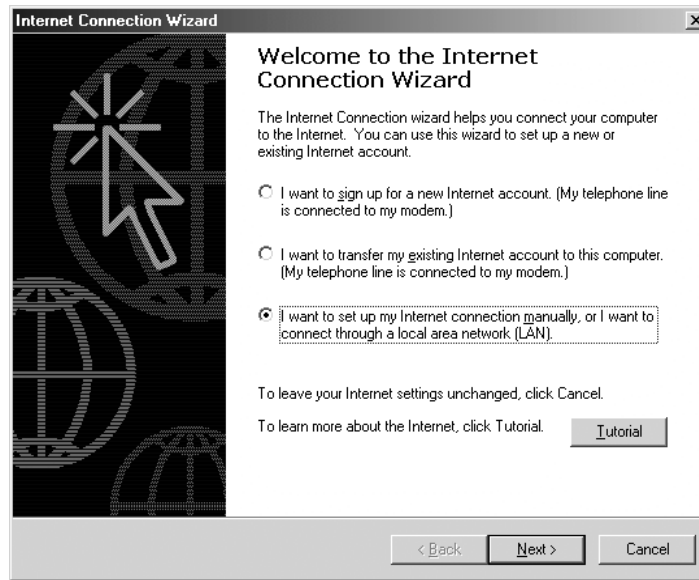
- Locate your Internet Explorer icon either on your desktop or under the **Start** menu.
- Right-click Internet Explorer and select **properties**.
- Select the **Connections** tab.



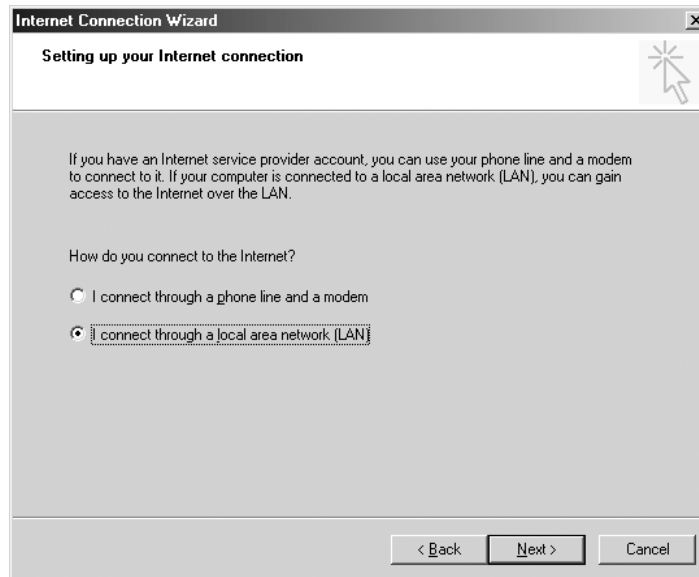
Step 2: Select dial whenever a network connection is not present. If this option is grayed out, continue to step 3.

Step 3: Click Setup to run the Internet Connection Wizard

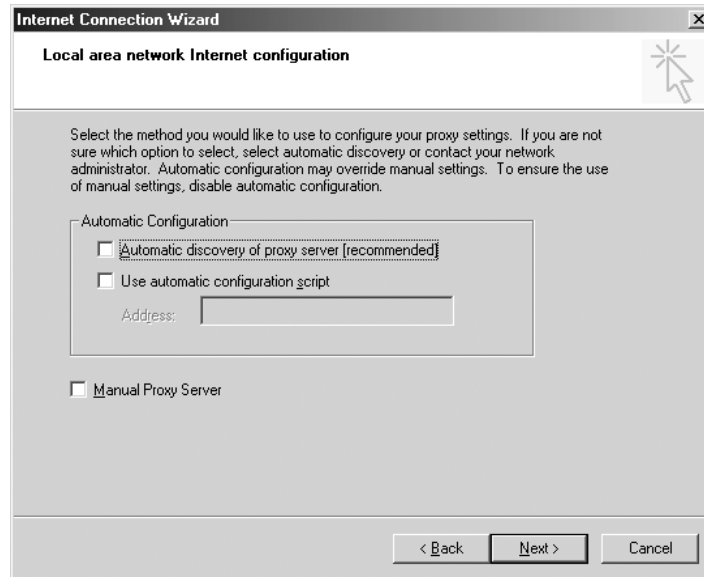
Step 4: Select I want to set up my Internet connection manually.



Step 5: Select I connect through a local area network (LAN).



Step 6: Clear the check boxes for “Automatic discovery of proxy server”, “Use automatic configuration script”, and “Manual Proxy Server” as shown below.



Step 7: Select No when asked if you want to setup an Internet mail account.

Step 8: Click Finish to complete the setup.